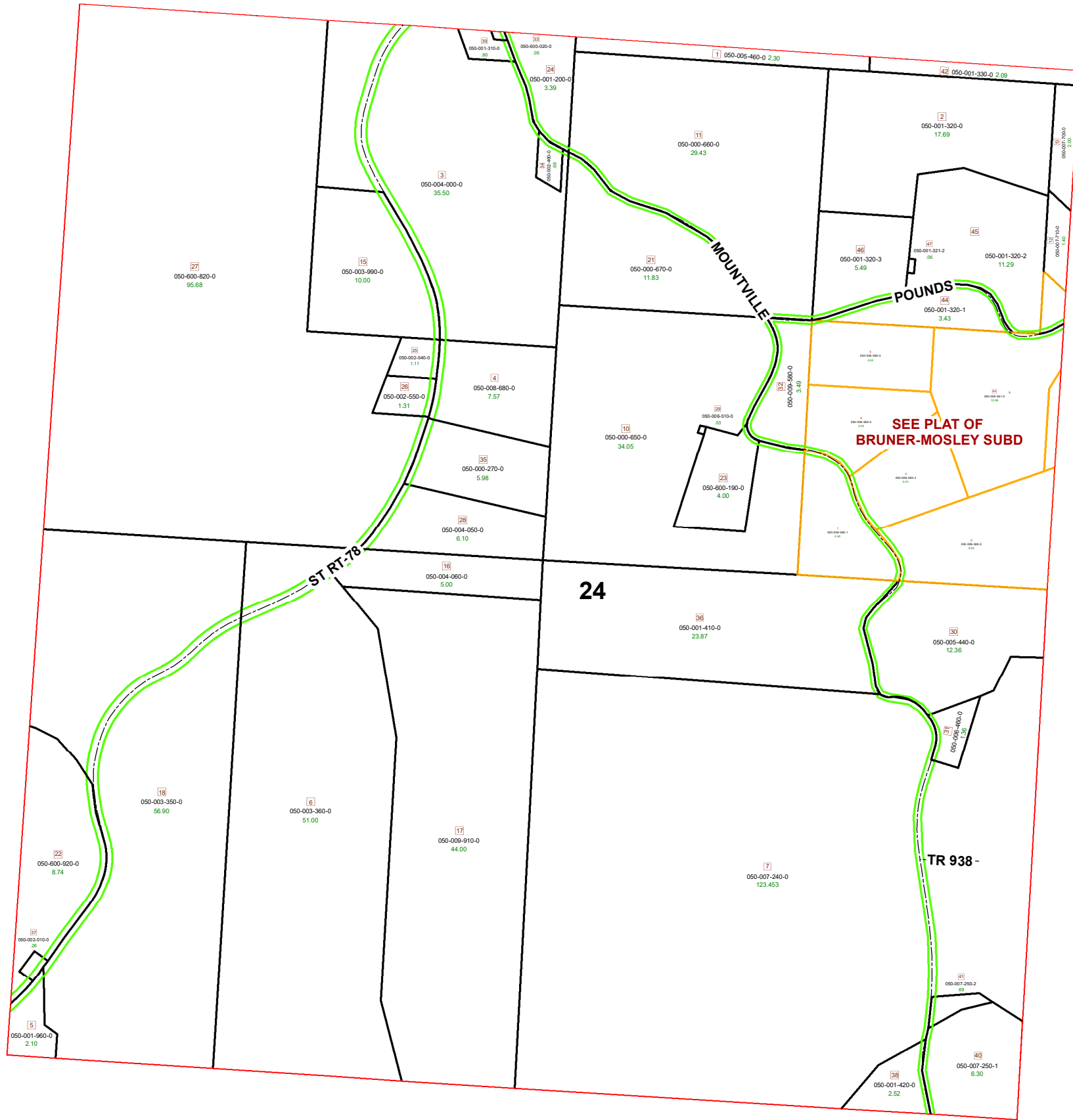


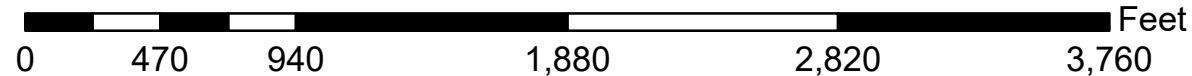
# HOMER TOWNSHIP SECTION 24 R13 TWP 7 MORGAN COUNTY, OH



PIN	VOL	PAGE	Owner	LegalDescr	Acre
050-008-680-0	OR225	2597	ALLISON WILLIAM CASEY	R13 T07 S24 SD 4	7.57
050-600-020-0	D.V	147	483 BISHOPVILLE WATER & SEWER ASSOCIA	R13 T07 S24 SD 33	0.05
050-001-200-0	D.V	174	780 BOWERSOCK DAVID J	R13 T07 S24 SD 24	3.39
050-005-460-0	OR203	543	BROOKS MICHAEL	R13 T07 S24 SD 1 W END	2.303
050-000-660-0	OR35	155	BRUNTON T D & DOROTHY R	R13 T07 S24 SD 11 SURVI	29.43
050-009-580-0	OR94	285	BRUNTON TREVISON D & DOROTHY R	R13 T07 S24 SD 32 SURVI	3.49
050-001-320-1	OR224	702	CANTRELL MATTHEW A & ELIZABETH A	R13 T07 S24 SD 44 SURVI	3.427
050-002-460-0	OR83	237	CARSEY GARY & JENNY A	R13 T07 S24 SD 34	0.69
050-007-710-0	OR220	443	CLARK TIMOTHY J & SONDR A J CO-TRUS	R13 T07 S24 SD 12	1.4
050-007-700-0	OR220	443	CLARK TIMOTHY J & SONDR A J CO-TRUS	R13 T07 S24 SD 13	2
050-000-650-0	OR39	277	DILLON CLYDE & LOUELLA M CO- TRUST	R13 T07 S24 SD 10 TRUST	34.05
050-000-670-0	OR39	284	DILLON CLYDE & LOUELLA M CO- TRUST	R13 T07 S24 SD 21 TRUST	11.83
050-009-910-0	OR28	708	HAMBEL CHARLES EDWARD & JUNE E	R13 T07 S24 SD 17	44
050-003-360-0	OR28	708	HAMBEL CHARLES EDWARD & JUNE E	R13 T07 S24 SD 6	51
050-003-350-0	OR28	708	HAMBEL CHARLES EDWARD & JUNE E	R13 T07 S24 SD 18	56.9
050-001-960-0	OR185	638	LANE ANNA MAE TRUST	R13 T07 S24 SD 5	2.1
050-002-010-0	OR185	638	LANE ANNA MAE TRUST	R13 T07 S24 SD 37	0.264
050-000-270-0	OR68	220	LUTTON LARS A	R13 T07 S24 SD 35 5703	5.98
050-007-250-1	OR207	506	MCCABE RANDY S	R13 T07 S24 SD 40	6.296
050-007-250-2	OR207	506	MCCABE RANDY S	R13 T07 S24 S D 41	0.685
050-006-460-0	D.V	139	89 MINGUS ROGER E & KAREN	R13 T07 S24 SD 31	1.36
050-007-240-0	OR231	4668	MINGUS RONALD R	R13 T07 S24 SD 7 EX COA	123.4
050-001-420-0	OR226	1834	MONTGOMERY KATHLEEN J	R13 T07 S24 SD 38 EX CO	2.52
050-001-410-0	D.V	85	286 MONTGOMERY KATHLEEN J & SHANE C	R13 T07 S24 SD 36 EX CO	23.87
050-006-510-0	OR195	369	MONTGOMERY KATIE A	R13 T07 S24 SD 29	0.03
050-600-190-0	OR195	369	MONTGOMERY KATIE A	R13 T07 S24 0	4
050-005-440-0	OR106	263	MONTGOMERY SHANE C & KATHLEEN J	R13 T07 S24 SD 30 SURVI	12.36
050-003-990-0	OR183	785	MONTGOMERY SHANE C & KATHLEEN J	R13 T07 S24 SD 15 SURVI	10
050-004-000-0	OR183	785	MONTGOMERY SHANE C & KATHLEEN J	R13 T07 S24 SD 3 SURVI	35.50
050-600-920-0	D.V	126	162 STATE OF OHIO	R13 T07 S24 LOT 22 MINGU	8.736
050-600-820-0	D.V	124	49 STATE OF OHIO	R13 T07 S24 LOT 27 FARIS	95.68
050-001-320-2	OR234	1975	TENNISON WILLIAM DEAN & LINDA	R13 T07 S24 SD 45 SURVI	11.28
050-002-550-0	OR73	265	WATT JONI M & DOUGLAS L	R13 T07 S24 SD 26 SURVI	1.31
050-002-540-0	OR73	265	WATT JONI M & DOUGLAS L	R13 T07 S24 SD 25 SURVI	1.11
050-001-310-0	OR151	42	WEEKS WILLIAM A TOD-SHAWNA MBLA	R13 T07 S24 SD 39 EX ALL	0.8
050-001-321-2	OR212	1132	WESTFALL DANIEL J	R13 T07 S24 SD 47	0.06
050-001-320-3	OR212	1132	WESTFALL DANIEL J	R13 T07 S24 SD 46	5.485
050-001-320-0	OR214	274	WESTFALL DANIEL J	R13 T07 S24 SD 02	17.69
050-001-330-0	OR214	274	WESTFALL DANIEL J	R13 T07 S24 SD 42	2.093
050-004-060-0	D.V	198	102 WHITE RICHARD E & SHIRLEY A	R13 T07 S24 SD 16 SURVI	5
050-004-050-0	D.V	198	102 WHITE RICHARD E & SHIRLEY A	R13 T07 S24 SD 28 SURVI	6.1



Boundaries	
----- Hidden	----- ROW
----- Hydro	----- Section
----- Roads	----- Lot
----- County	----- Township
----- Parcel	----- Parcels



Disclaimer: The information that these maps contains is for reference purposes only. Please bring any erros to the attention of the Engineer's Office staff.  
Thank you